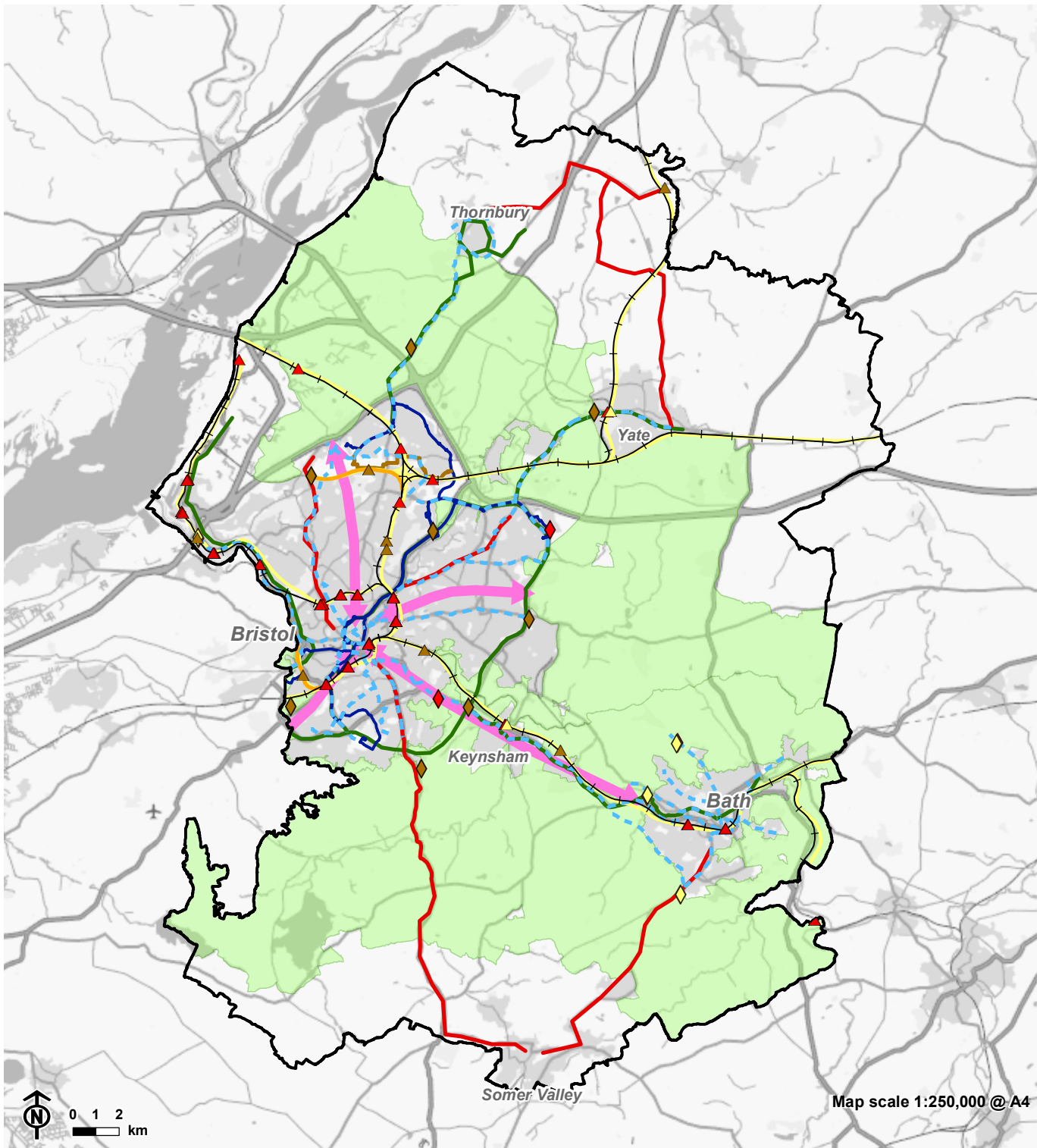


# Sustainable transport and Green Belt

This map shows sustainable transport corridors and how they relate to the Green Belt in the Spatial Development Strategy area. This includes potential public transport investment. For a definition of the Green Belt see Q4 of the survey.



Contains Ordnance Survey data © Crown copyright and database right 2020.

CB:JH EB:Harbich\_J LUC FigXXX\_11222\_Opportunities\_Sustainable\_Transport\_A4P 03/11/2020  
Source: LUC, WoECA, MHCLG, Travelwest.

## Sustainable Transport Routes

- West of England Combined Authority Region
- ◆ Existing Park&Ride
- ◆ Proposed Park&Ride Improvements
- ◆ Proposed Park&Ride
- ▲ Existing Railway Stations
- ▲ Proposed Rail Station Improvements
- ▲ Proposed New Rail Stations
- Green Belt
- Key Cycle Routes

## (Potential) Public Transport Corridors

- Potential metrobus Improvements (Including Extensions)
- Improved Bus Corridor
- ↔ Mass Transit Corridors
- Existing metrobus Routes
- Proposed MetroWest Extensions
- Cribbs-Patchway metrobus Extension
- +— Existing Passenger Railway
- Rail Improvements

All locations and alignments are indicative and subject to further feasibility work and consultation.

Map based on the JLTP4 but does not represent the full policy basis. For further information please see:

<https://travelwest.info/projects/joint-local-transport-plan>

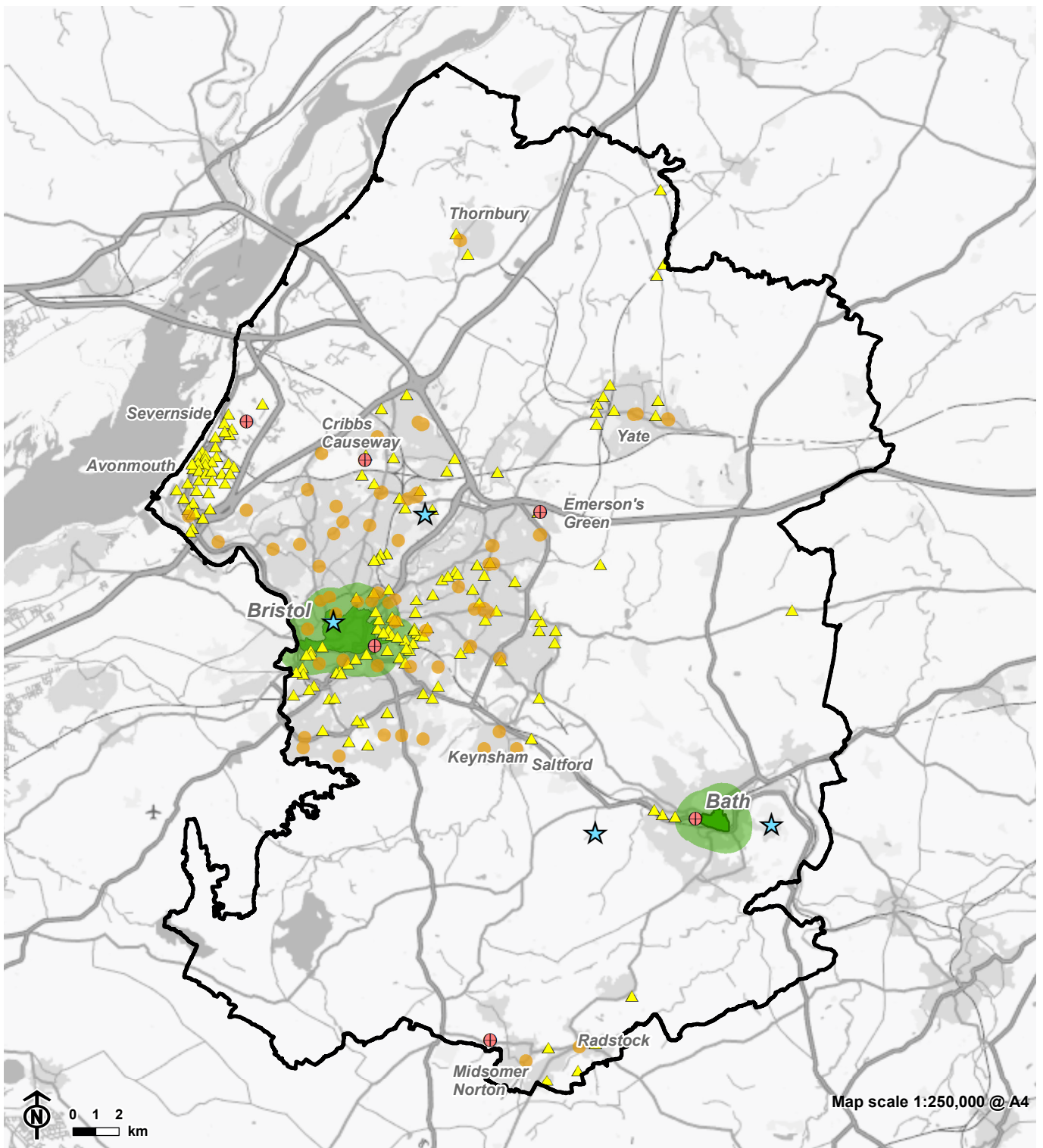
# Sustainable transport

The following schemes are being actively worked on in the SDS area:

- Mass transit
- Bristol Temple Meads station enhancements
- Metrowest Phase 1 and 2 service and infrastructure upgrades
- New Park and Ride sites at Yate, Hicks Gate and M32 Corridor
- Cycling and walking corridor upgrades
- Cribbs Patchway metrobus extension (under construction)
- Local bus service and infrastructure corridor improvements including:
  - A4 Bath Road (Bristol to Bath strategic corridor)
  - A4018 / A37 Corridor
  - A38 North (Bristol City Centre to Thornbury)
  - Bristol City Centre
  - A4174 Ring Road / A432 to Yate
  - A37 South (Bristol to Midsomer Norton)
  - Metrobus consolidation

# Town and employment centres

This map shows town and local centres, universities and employment areas in the Spatial Development Strategy area.



Contains Ordnance Survey data © Crown copyright and database right 2020.

CB:JH EB:Harbich\_J LUC FigXXX\_11222\_Opportunities\_Town\_Centres\_A4P 29/10/2020  
Source: LUC, WoECA

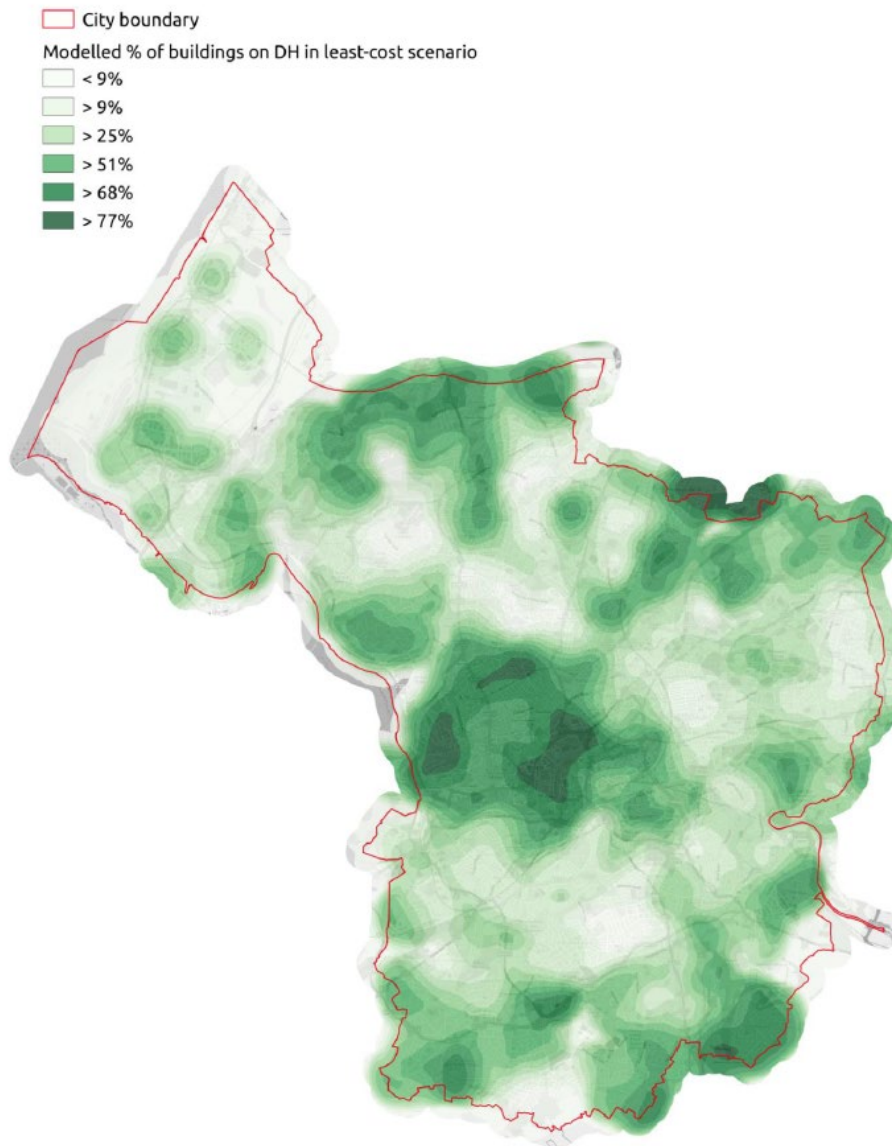
## Opportunities: Town & Local Centres, Employment Areas and Universities

- |   |                                       |
|---|---------------------------------------|
| West of England Combined Authority area | Enterprise Zones and Enterprise Areas |
| City Centres                            | Other Key Employment Areas            |
| Areas within 1km of a City Centre       | Universities                          |
| Other Centres                           |                                       |

Please note not all local centres are mapped, however the map is a reasonable indication of the distribution of key employment and retail areas in the WECA area.

# Bristol district heat network potential

This map shows potential areas that could be designated for district heat networks in Bristol in the future.

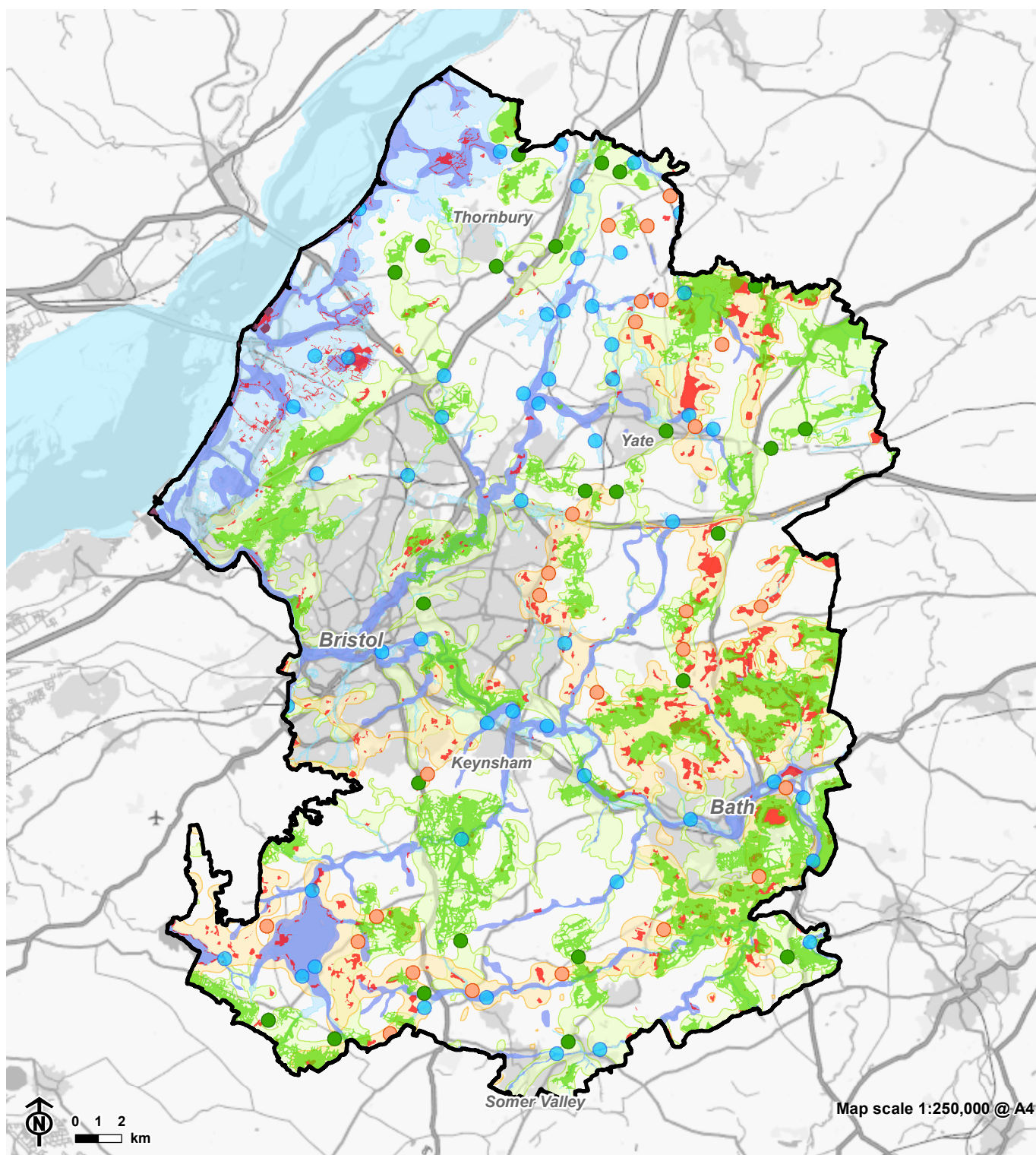


Basemap: Map data copyrighted OpenStreetMap contributors and available from <https://www.openstreetmap.org>

The darker green areas show a higher % of buildings with potential to be connected to a district heat network. This is based on scenario modelling undertaken by Centre for Sustainable Energy with Ricardo and Eunomia.

# Nature recovery network

This map shows opportunities for improving connectivity to support nature recovery in the Spatial Development Strategy area.



Contains Ordnance Survey data © Crown copyright and database right 2020.

CB:JH EB:Harbich\_J LUC FigXXX 11222 Opportunities Nature Recovery Network\_A4P 29/10/2020  
Source: LUC, WoECA, WENP (West of England Nature Partnership).

## Opportunities: Nature Recovery Network

West of England Combined Authority area	Wetland Connectivity Opportunities
Grassland Connectivity Opportunities	Wetland Strategic Network
Existing Grassland	Flood Zone 2 (Indicative Wetland)
Grassland Strategic Network	High Tide Roosts
Woodland Connectivity Opportunities	Wetland Severn Estuary
Woodland Ancient Network Model	
Woodland Strategic Network	

For more information please see <https://www.wenp.org.uk/nature-recovery-network/>